

SHEET 1 OF 2 AUGUSTA, MAINE

100-164

PROJECT DESIGN ENGINEER	DATE
DESIGN - DETAILED	12-22-88
CHECKED	6-87
REVISIONS	
FIELD CHANGES	

ESTIMATED QUANTITIES					
ITEM NO.	DESCRIPTION	95-7(91)	95-7(95)	UNIT	ESTIMATE
		1.95 S.B. MCR	1.95 S.B. Rte. 143		Both Projects
202.17	Removal of Existing Bituminous Pavement	0.47	0.53		1
506.142	Removal of Existing Concrete Curb & Sidewalk	0.47	0.53		1
202.17	Removing Existing Railing (Retained by Bridge)	383	384		717
202.17	Removing Existing Structural Concrete	—	—	L.S.	1
403.08	Hot Bituminous Pavement, Grading C	117	113	115	345
503.13	Reinforcing Steel Fabricated and Delivered	10	580		1190
503.13	Reinforcing Steel Placing	61	580		1190
506.142	Field Painting Existing Structural Steel	0.31	0.41	0.28	L.S.
506.16	Surface Preparation of Existing Structural Steel	240	320	215	M.H.
507.092	Aluminum Bridge Railing, 2-Bar	321	373	—	L.F.
508.1301	Membrane Waterproofing (Newport)	0.47	0.53	—	L.S.
508.1302	Membrane Waterproofing (Etna)	—	—	1	L.S.
518.30	Rehabilitation of Structural Concrete Slab to Reinforcing Steel	285	323	290	S.F.
518.31	Rehabilitation of Structural Concrete Slab to Below Reinforcing Steel	97	110	115	S.F.
526.24	Bridge Joint Modification	2	2	—	Each
526.301	Temporary Concrete Barrier Type 1	0.43	0.55	0.32	L.S.
506.123	Bridge Connections	4	4	—	Each
LUMP SUM QUANTITIES					
202.17	Removal of Existing Bituminous Pavement	530	580	—	61
506.142	Removal of Existing Concrete Curb & Sidewalk	20	22	—	43
202.17	Removing Existing Structural Concrete	—	—	62	C.Y.
506.142	Field Painting Existing Structural Steel	207,500	259,700	236,500	Lb.
508.1301	Membrane Waterproofing (Newport)	540	610	—	7150
508.1302	Membrane Waterproofing (Etna)	—	—	650	S.Y.

GENERAL CONSTRUCTION NOTES

- Maintain one 12-foot minimum traffic lane at all times.
- All work shall be done behind temporary concrete barrier.
- The top surface of the existing concrete slabs shall be repaired as directed by the Engineer. Payment will be made under the appropriate Item No. 518.30 and 518.31.
- All existing structural steel at each bridge shall be cleaned and painted.
- Depress the Bituminous Wearing Surface around the existing bridge drains as directed by the Engineer.
- Payment for drilling and grouting of reinforcing steel will be considered incidental to Item No. 503.13, Reinforcing Steel, Placing.
- On the 1-95 S.B. over Route 143 bridge only, a second application of full coverage membrane waterproofing shall be applied over, and in the same manner as, the first full coverage layer. The side seams and end overlaps of the first and second layers shall be staggered. No additional payment will be made for the second full coverage layer of membrane waterproofing.
- On the two Newport bridges, transition the approach pavement thickness one inch over about 100 feet to meet the increased finished grade of the bridge decks.

Newport: 1R-95-7(91)
Etna: 1R-95-7(95)

F.R.W.A. PER. NO.	STATE	PROJECT NUMBER	SHEET NO.	TOTAL SHEETS
1	MAINE	95-7(95)	19	21

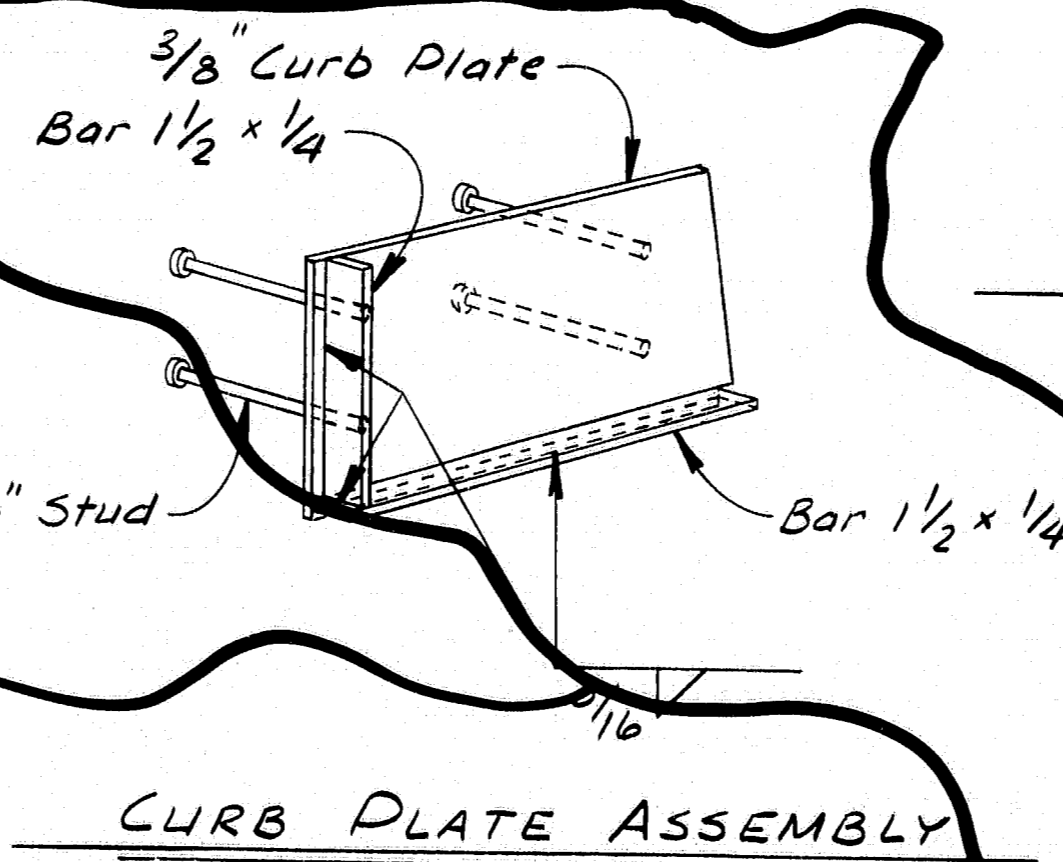
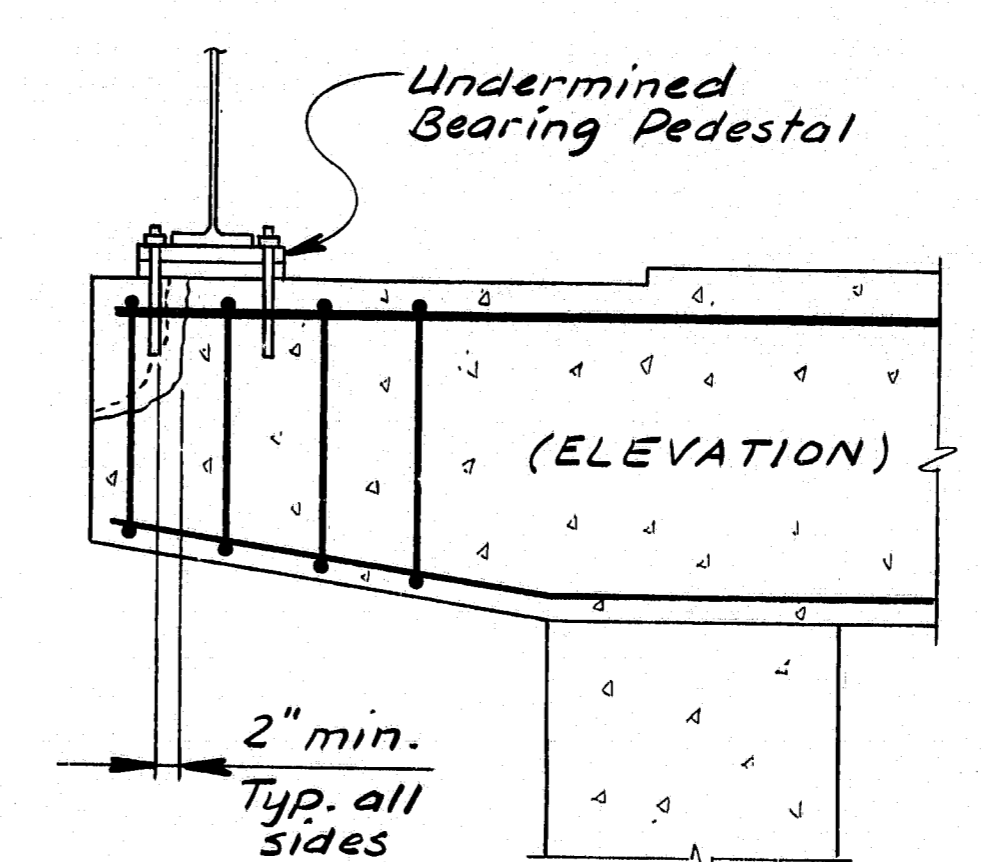
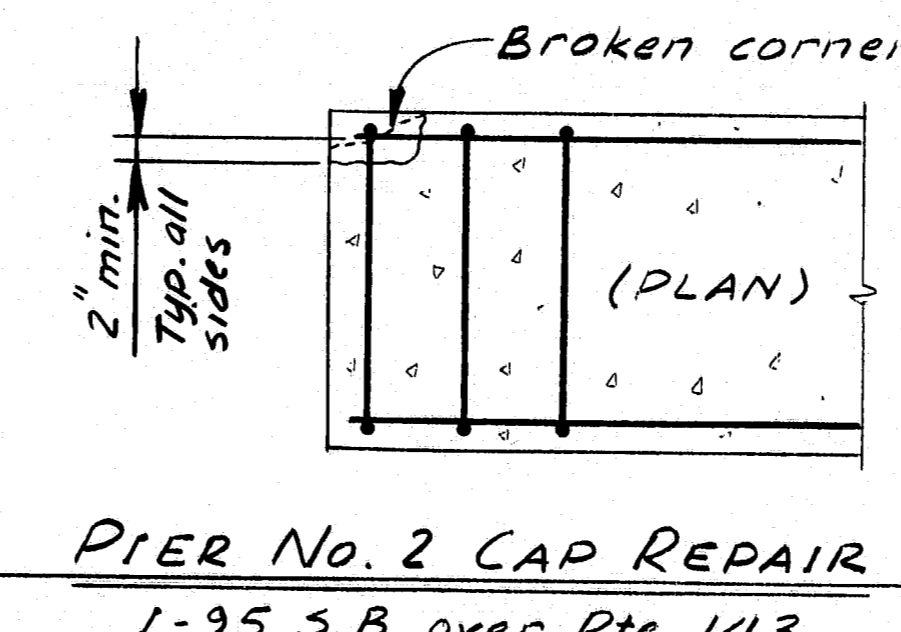
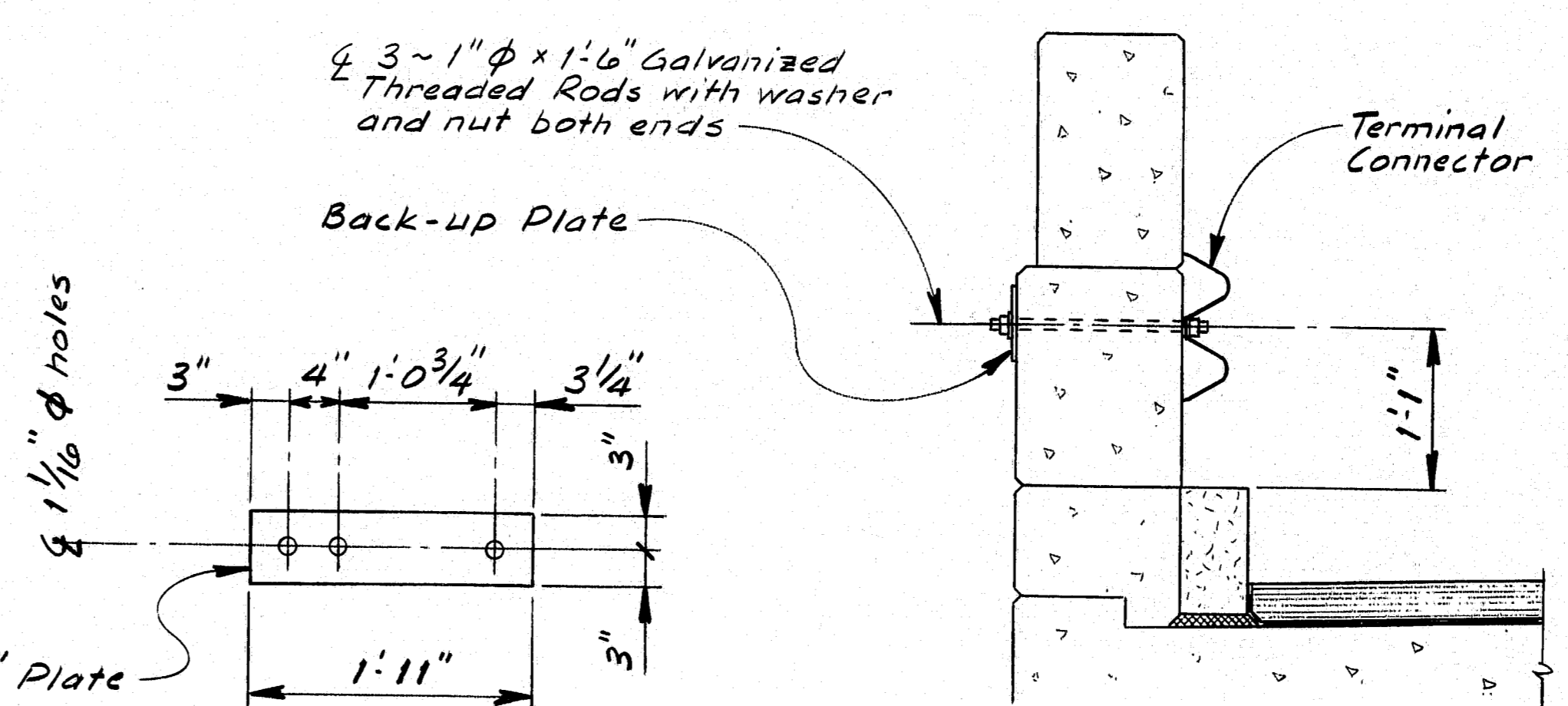
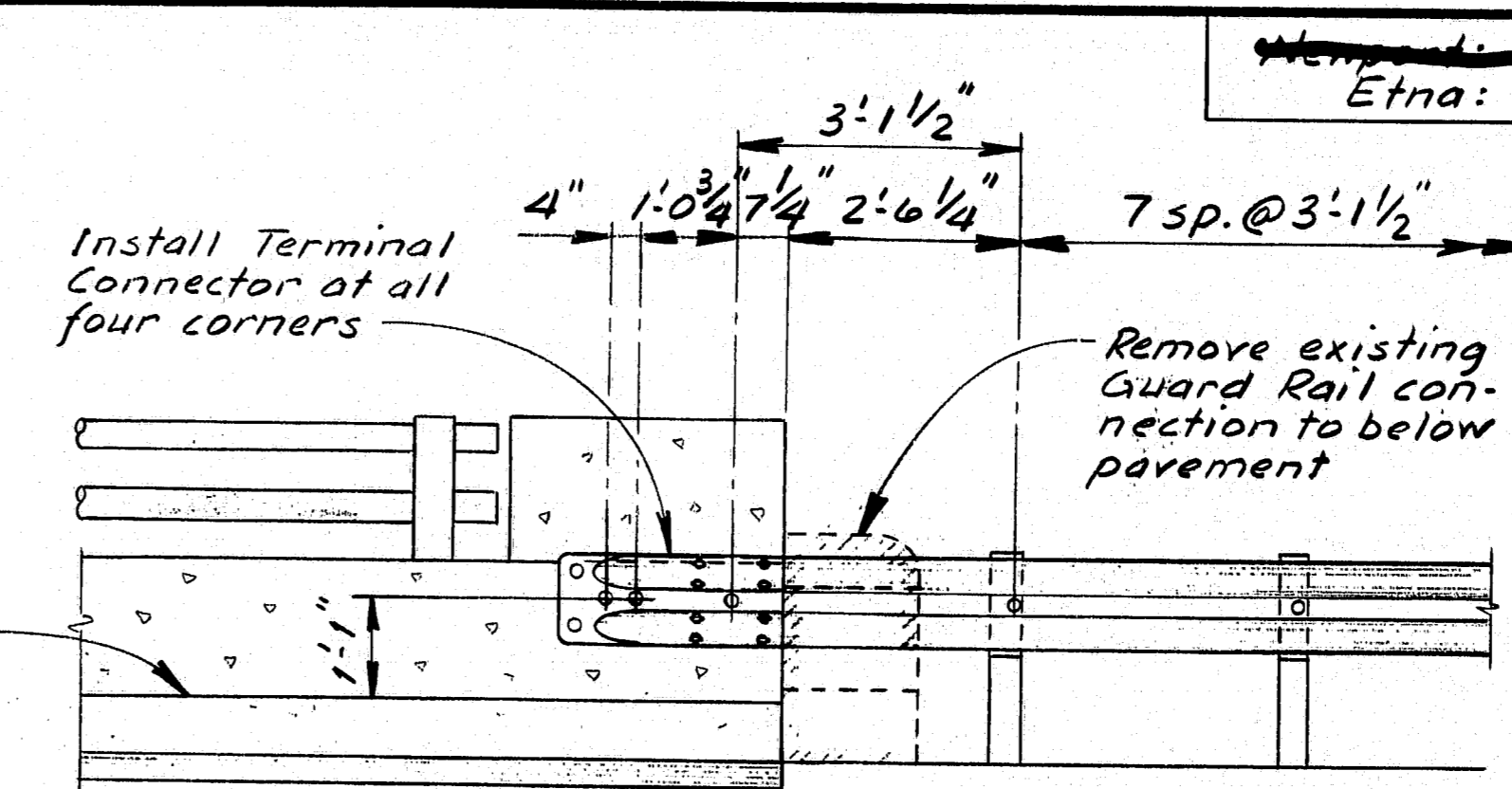
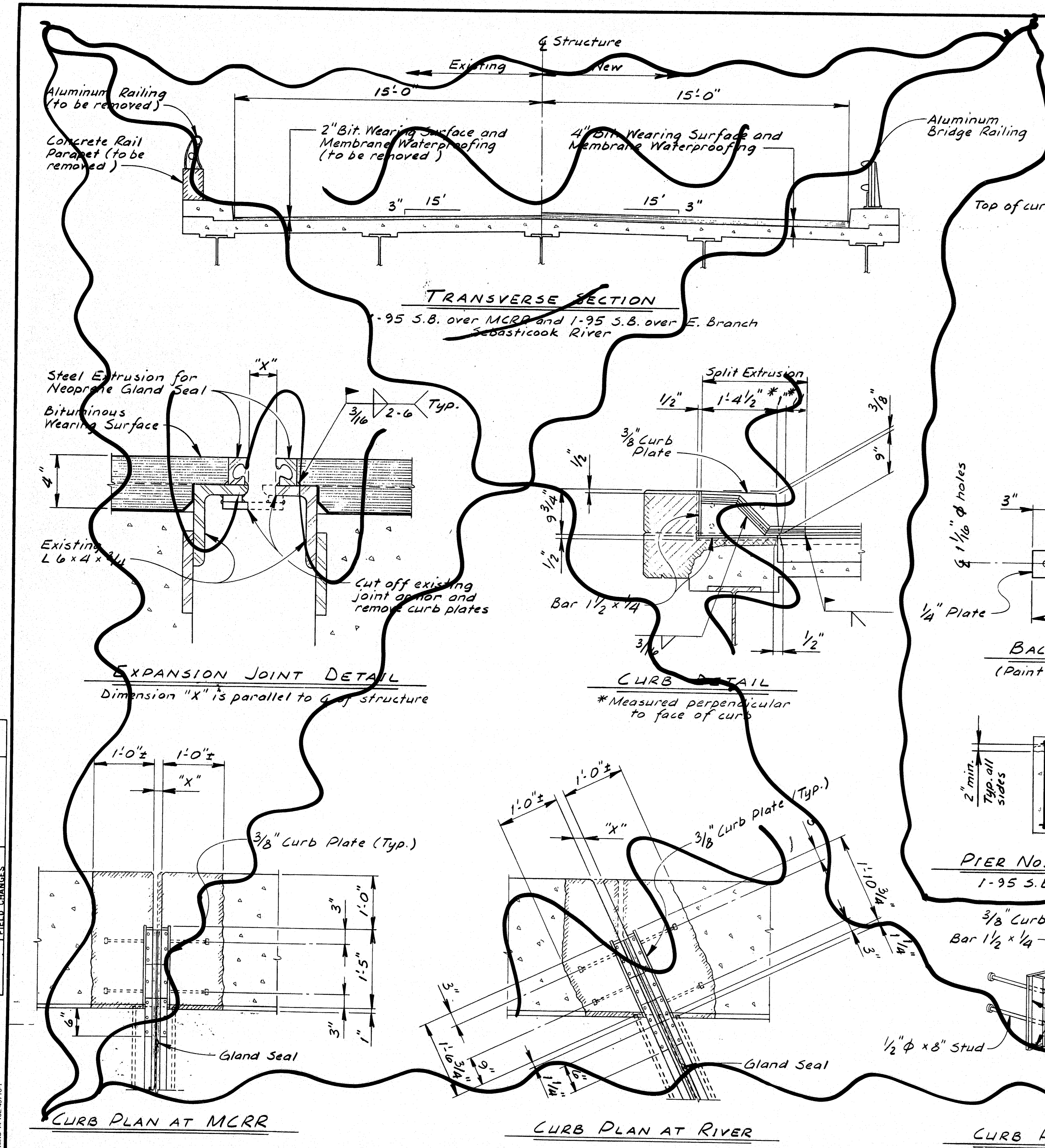
"REVISED AS BUILT" J.R. NEVINS 12-22-88

STATE OF MAINE DEPARTMENT OF TRANSPORTATION
INTERSTATE 95 S.B. OVER MERR
INTERSTATE 95 S.B. OVER
E. BRANCH SEBASTICUS RIVER
NEWPORT
INTERSTATE 95 S.B. OVER RTE. 143
ETNA
ESTIMATED QUANTITIES
SHEET 2 OF 2 AUGUSTA, MAINE

100-165

ETNA 95-7(95)

PROJECT DESIGN ENGINEER	DATE
BY	12-22-88
CHECKED	12-22-88
DESIGNED	12-22-88
REVISIONS	
FIELD CHANGES	
PLANS	



- NOTES (1-95 S.B. over Rte. 143)**
- Any damage caused by drilling holes for the Terminal Connector anchorage shall be repaired at the Contractor's expense.
 - The superstructure shall be supported by a method approved by the Engineer before removing deteriorated concrete from the pier cap bearing area. The exact method of repair shall be as directed by the Engineer. Payment will be made under the provisions of Subsection 104.03, Extra Work.
 - Removal of the existing concrete wearing surface will be paid for under Item No. 202.17, Removing Existing Structural Concrete.
 - Payment for the Terminal Connectors, including installation, will be considered incidental to the Guard Rail Pay Items.

GRAND SETTING TABLE

	MCCR No. 1	MCCR No. 2	River No. 1	River No. 2
120	11 1/16"	1 3/8"	1 1/4"	1 11/16"
105	1 1/16"	1 1/2"	1 3/8"	1 3/4"
90	1 3/16"	1 5/8"	1 1/8"	1 13/16"
75	1 7/8"	1 3/4"	1 11/16"	1 7/8"
60	1 5/16"	1 1/8"	1 7/8"	1 15/16"
45	2"	2"	2"	2"
30	2 1/16"	2 1/8"	2 1/8"	2 1/16"
15	2 1/8"	2 1/4"	2 5/16"	2 1/8"
0	2 1/16"	2 3/8"	2 7/16"	2 3/16"
-15	2 1/4"	2 1/2"	2 5/8"	2 1/4"
-30	2 3/16"	2 5/8"	2 3/4"	2 3/16"

Dimension "X"

STATE OF MAINE DEPARTMENT OF TRANSPORTATION
INTERSTATE 95 S.B. OVER MCCR INTERSTATE 95 S.B. OVER E. BRANCH SEBASTICOOK RIVER NEWPORT INTERSTATE 95 S.B. OVER Rte. 143 ETNA BRIDGE DETAILS
SHEET 3 OF 81 AUGUSTA, MAINE

100-166

"Revised as Built"
J.R. NEVINS 12-22-88

ETNA 95-7 (95)